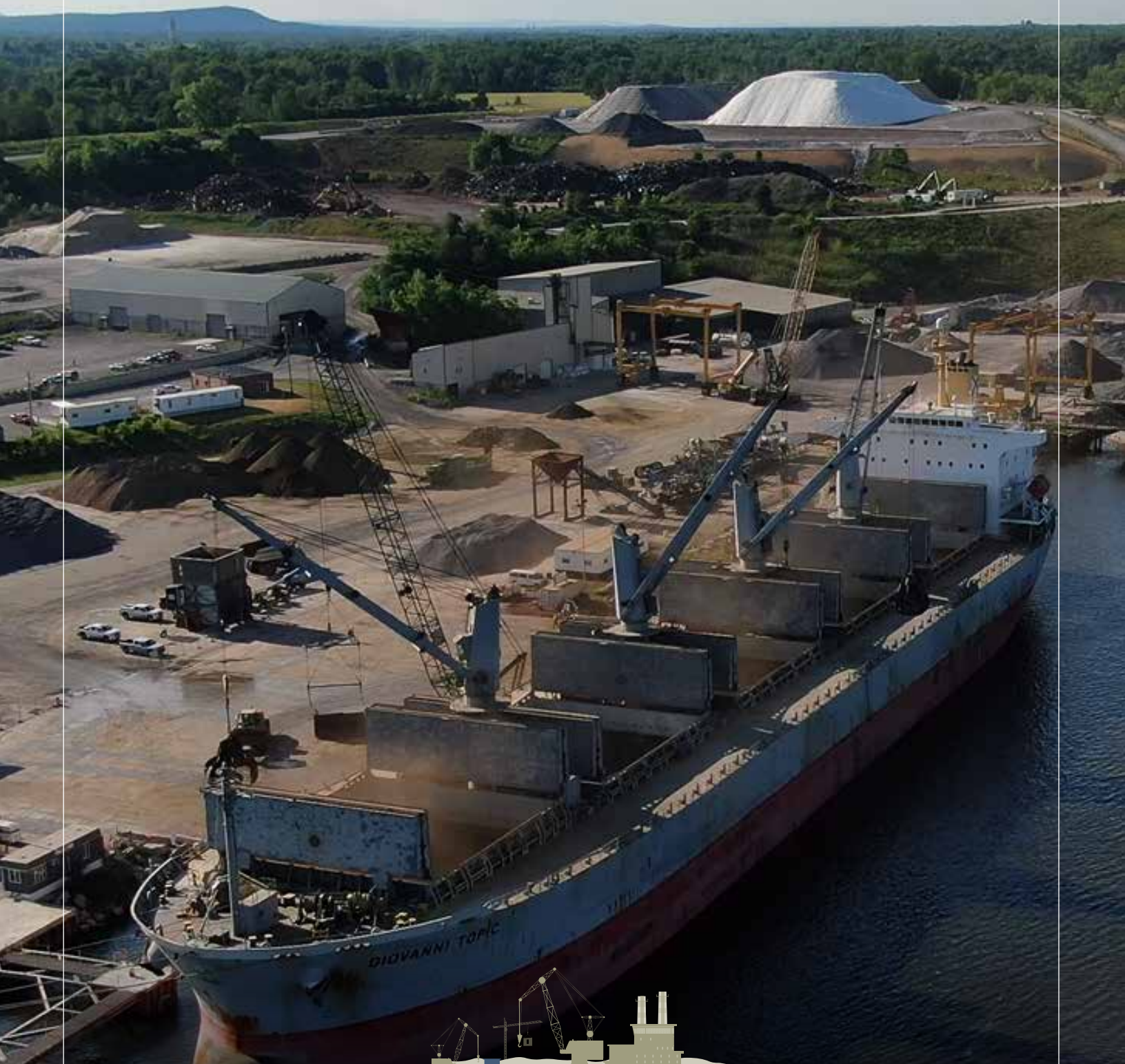
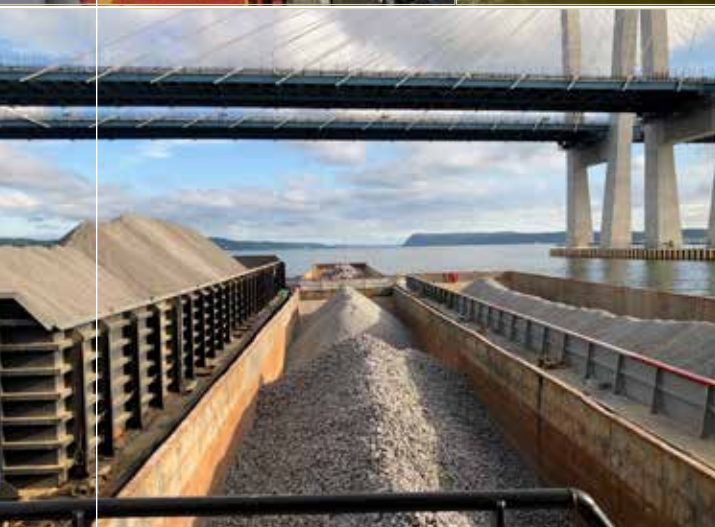


Carver COMPANIES



THE PIONEER *of* **INTEGRATIVE SOLUTIONS** *on* **LAND & SEA**





Carver Laraway
Owner, Carver Companies

OUR MISSION

For over 30 years, Carver Companies' fundamental belief has been to provide unparalleled service all while maintaining our values of honesty and integrity both on land and sea.

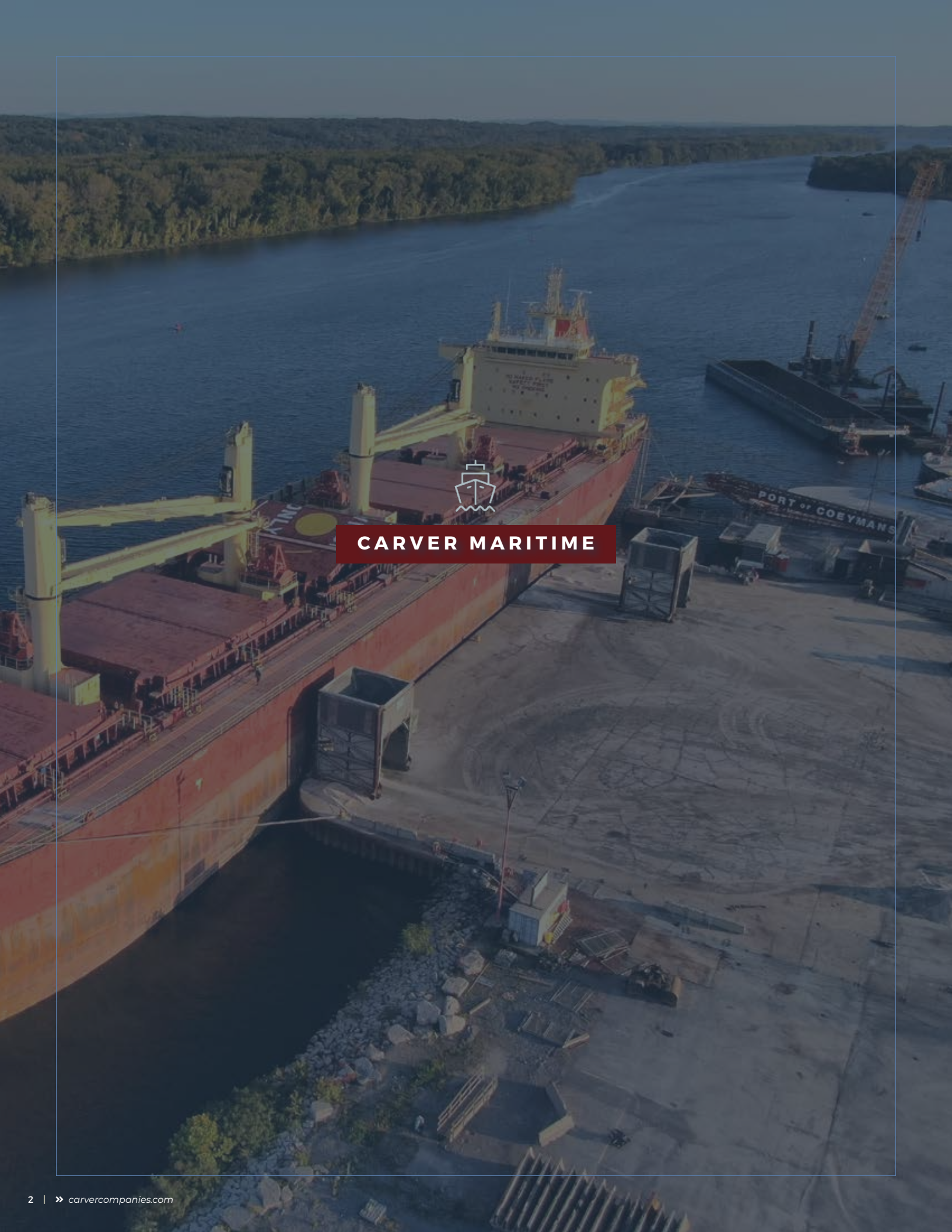
We pride ourselves on our unmatched logistics services and superior products to our customers, partners and tenants. We work hard to inspire our diverse, well-rounded workforce and management team to always perform at the highest levels of safety and professionalism.

Carver Companies has a long-term vision of growth that will transform the way our clients respond to challenges. We become your partner in comprehensive project management. We provide resources unlike any other organization, and in turn can respond quickly to our client's needs, no matter how unique.

SAFETY AT CARVER COMPANIES

- ▶ FULLY OSHA & MSHA COMPLIANT
- ▶ EXPERIENCE MODIFICATION RATE (EMR)= .74
- ▶ U.S. COAST GUARD MARITIME ISPS SECURITY (MARSEC) LEVEL
- ▶ OSHA SUBPART CC CERTIFIED RIGGERS
- ▶ STATE LICENSED & NCCCO CRANE OPERATORS
- ▶ ISNETWORLD & AVETTA COMPLIANT





CARVER MARITIME



Our built-to-suit warehousing and facilities with turnkey customer solutions are located only 10 miles south of Albany, NY and 4 miles south of exit 22 of the NYS Thruway. With

easy access by river, truck, or rail to major access points in the Northeast, our warehousing and outside yard storage capability strengthens the advantages in the region with fast, cost-effective logistics, stevedoring and terminal operations.

- TENANT OPERATION SUPPORT
- ON SITE SUPPORT SERVICES
- BUILT-TO-SUIT WAREHOUSING AND FACILITIES



ADJACENT TO THE
**Port of
Coeymans**

WE HAVE OVER
1.2 m sq/ft
UNDER ROOF



FEATURING A
450 acre
MARINE TERMINAL

A HEAVY LIFT
4,000 lb.
PER SQ. FT. DOCK

AND ALSO A
820 MT
MARINE TRAVELIFT



The Port of Coeymans is New York's premier industrial waterfront property.

Our site is equipped to handle modularization of power plants and bridges, as well as small manufacturing, marine construction, aggregates, and disaster recovery projects. We are a privately-owned marine terminal where its owner and staff are dedicated to providing its customers with top-flight service from a prime location for all shipping, processing, warehousing and transportation needs.



- STEVEDORING
- TERMINAL HANDLING
- WAREHOUSING
- TUG AND BARGE
- CARGO TYPES HANDLED
- STAGING AREA WITH INDOOR/OUTDOOR STORAGE
- BULK STORAGE
- HEAVY LIFTS
- SPECIALIZED EQUIPMENT RENTALS
- SHIP AND BARGE REPAIR
- PROPERTY RENTALS
- DREDGING
- RECYCLING
- PORT-TO-PORT SERVICES
- TRANSPORTATION/TRUCKING
- FOREIGN TRADE ZONE AVAILABILITY
- LAY BERTH
- RIPRAP WATERWAY REPAIR



FEATURED PROJECT:
PSEG H.R.S.G. Construction/Mobilization
Port of Coeymans, Coeymans, New York

The construction and assembly of this 130 ft tall, 8 million pound, HRSG was all done on site at the Port of Coeymans and its mobilization through New York's waterways was executed by Coeymans Marine Towing.



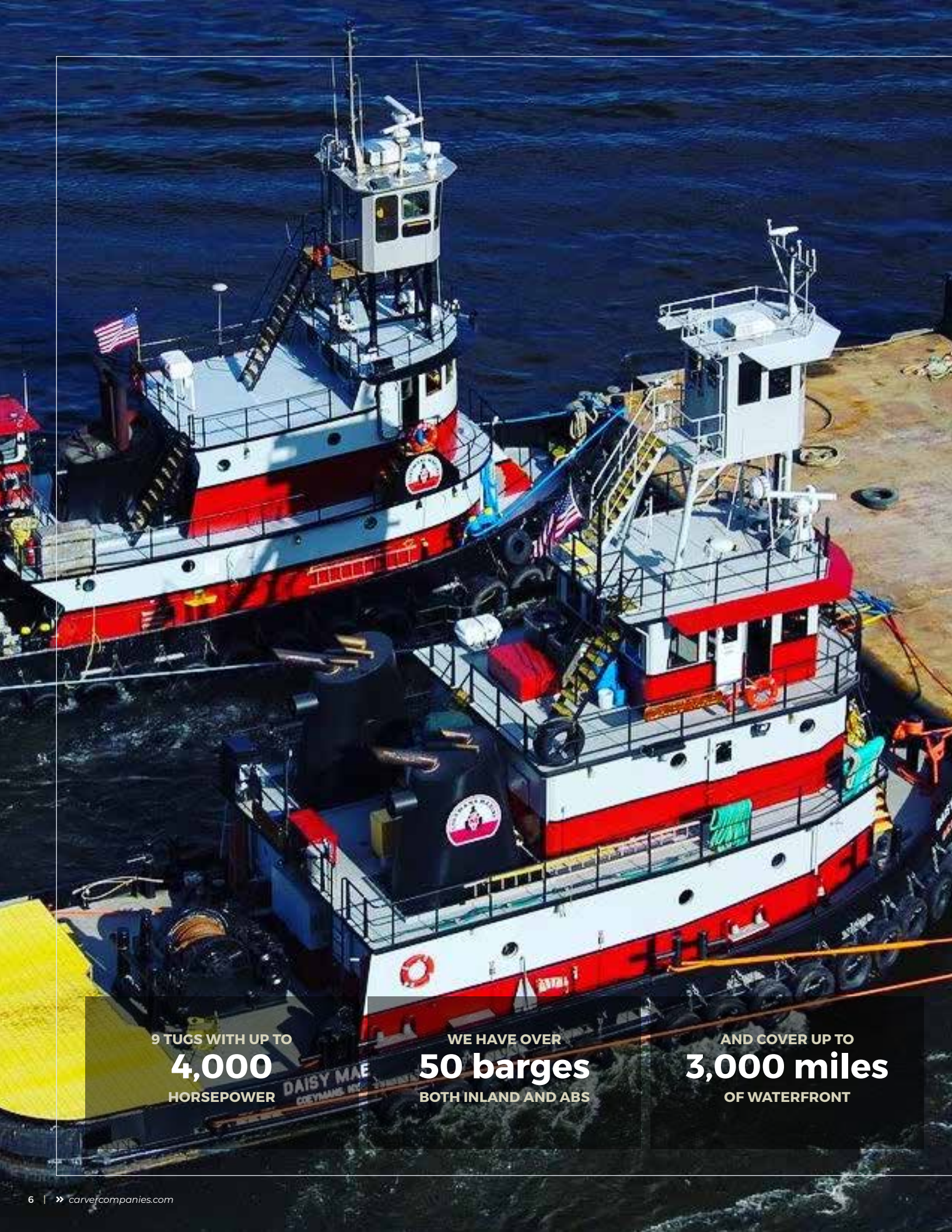
FEATURED PROJECT:
Little Island NYC
Port of Coeymans, Coeymans, New York

The Port of Coeymans is thrilled to have played a role in the construction of Little Island NYC. From 2018 to 2019, 132 pots were assembled at our Port then barged to Manhattan.



FEATURED PROJECT:
Tappan Zee Bridge Project
Port of Coeymans, Coeymans, New York

In 2014, the Port was awarded contracts for the New NY Bridge through Tappan Zee Constructors (TZC) for property leasing, steel fabrication, mechanicals, and stevedoring contracts for precast work. The Bridge is a \$3.4 billion project that required an investment of millions of dollars to support the overall construction of the structure.



9 TUGS WITH UP TO
4,000
HORSEPOWER

WE HAVE OVER
50 barges
BOTH INLAND AND ABS

AND COVER UP TO
3,000 miles
OF WATERFRONT



Coeymans Marine Towing provides a growing inland and offshore tug and barge fleet, currently composed of nine tugboats and a vast assortment of Deck & Hopper barges.

CMT offers a full line of towing services, including barge and tug boat rentals. In conjunction with the cranes and heavy construction equipment of Carver Companies, Coeymans Marine Towing is able to bring you a cost-effective solution for your industrial marine construction needs.

- INLAND TUGBOATS
- OFFSHORE "ABS" BARGES
- INLAND HOPPER AND DECK BARGES
- SIRE INSPECTED TUG SERVICES
- OFFSHORE TUGBOATS
- SHIP ASSIST



FEATURED PROJECT:
Genesee Beer Tanks
Rochester, NY

Coeymans Marine Towing played an essential role in delivering new beer tanks to the oldest brewery in New York State, Genesee Brewing Co. Coeymans Marine Towing used tugboats CMT Otter and CMT Pike and their 235 barge to transport the tanks through the Erie Canal.

FEATURED PROJECT:
Tappan Zee Bridge
Port of Coeymans, Coeymans, NY

Coeymans Marine Towing's tugboats the CMT Otter, CMT Pike, Daisy Mae, Mister Jim, and the Helen Laraway moved pieces of the new Tappan Zee Bridge down the Hudson River by barge.

FEATURED PROJECT:
PSEG H.R.S.G. Transportation
Port of Coeymans, Coeymans, NY

The mobilization of the HRSG through New York's waterways was executed by Coeymans Marine Towing's tugboats the Daisy Mae, Mister Jim, Helen Laraway and CMT Otter. This project was the first of its size and kind in the United States to be built offsite and delivered via barge in order to facilitate significant cost-saving and land usage.



WE HAVE
dry dock
CAPABILITY

WITH OVER
240k sq/ft
UNDER ONE ROOF

DUAL SERVED RAIL
20 acre
MARINE TERMINAL



Carver Maritime Charleston joined the Carver Companies family in June 2016 and has quickly developed into a strategic port location known for its shipping and warehouse storage operations along the entire east coast. With a deep-water pier for loading and offloading ships and barges, and over hauled a million square feet of warehousing space, Carver Maritime Charleston is rapidly becoming the next crown jewel withing the Carver Companies family.



- STEVEDORING
- TERMINAL HANDLING
- WAREHOUSING
- TUG AND BARGE
- CARGO TYPES HANDLED
- STAGING AREA WITH INDOOR/
OUTDOOR STORAGE
- BULK STORAGE
- SPECIALIZED EQUIPMENT RENTALS
- SHIP AND BARGE REPAIR
- PROPERTY RENTALS
- DREDGING
- RECYCLING
- PORT-TO-PORT SERVICES
- TRANSPORTATION/TRUCKING
- FOREIGN TRADE ZONE
AVAILABILITY
- LAY BERTH
- RIPRAP WATERWAY REPAIR



FEATURED PROJECT:
Hugh K. Leatherman, Sr. Terminal
Hugh K. Leatherman, Sr. Terminal

Carver Maritime provided the stone to Ragnar Benson Construction, the General Contractor for Phase 1 of the upcoming Navy Base Intermodal Facility. This stretch of rail line connects to the new Hugh Leatherman Terminal that Carver Maritime laid the groundwork for upon arrival to Charleston.



FEATURED PROJECT:
Golden Ray Pipe Welding
Pier J, Charleston, SC

Carver Maritime completed a 2.8 million dollar pipe welding project for Weeks Marine. A 656ft cargo vessel, The Golden Ray, overturned in Georgia and had to be cut apart. Carver Maritime created the pieces necessary for the retaining system used to access and cut up the vessel.



FEATURED PROJECT:
Ocean Freight
Pier J, Charleston, SC

Carver Maritime is currently bringing in containers of material from around the world that will be transloaded and stored in our warehouse facilities for future delivery. Carver Maritime handles the cargo from the port of export, to the port of import, to the point of rest, and to the end customer if needed.



Carver Maritime Manatee joined the Carver Companies family in 2018 and is known for its prime positioning in the Tampa Bay Channel.

- STEVEDORING
- TERMINAL HANDLING
- WAREHOUSING
- TUG AND BARGE
- CARGO TYPES HANDLED
- STAGING AREA WITH INDOOR/OUTDOOR STORAGE
- BULK STORAGE
- SPECIALIZED EQUIPMENT RENTALS
- SHIP AND BARGE REPAIR
- PROPERTY RENTALS
- DREDGING
- RECYCLING
- PORT-TO-PORT SERVICES
- TRANSPORTATION/TRUCKING
- FOREIGN TRADE ZONE AVAILABILITY
- LAY BERTH
- RIPRAP WATERWAY REPAIR



WE HAVE MORE THAN
40 feet
OF WATER DRAFT

TERMINAL ENCOMPASSES
28 acres
OF LAYDOWN AND BUILDINGS



Carver Marine Steelworks is a full-service vessel repair facility located at the Port of Coeymans, conveniently situated on the Hudson River just south of Albany. Equipped with a Marine Travelift that has the capability of hauling vessels up to 820MT and 60ft in beam.

- DRYDOCKING SERVICES VIA TRAVELIFT
- SHORT HAUL
- STEEL FABRICATION AND REPAIR
- ABS CERTIFIED WELDERS
- BLAST AND PAINT SERVICES
- TANK CLEANING AND MUCKING
- VESSEL TOPSIDE REPAIRS
- MECHANICAL AND ELECTRICAL SERVICES



FEATURING A
820 MT
MARINE TRAVELIFT

WE HAVE
ABS certified
WELDERS



Providing safe and efficient stevedoring services for bulk, break bulk, and project/heavy-lift cargo.

We specialize in bulk-handling, vessel lightering, barge services, project cargo services with a traveling stevedore workforce of qualified supervision and equipment operators. Our equipment inventory is second to none, including grabs, grapples, front end loaders, excavators, material handlers, dozers, triaxles, haul trucks, and cranes up to 330 ton lifting capacity.

- BULK
- PROJECT CARGO
- BREAK BULK
- CONTAINERS
- BARGE SERVICES COMBINED WITH INLAND FREIGHT
- SHIP LIGHTERING
- DOCK HANDLING
- WAREHOUSING SERVICES
- EQUIPMENT RENTALS



READILY AVAILABLE ON
2 coasts
(EAST AND GULF)

WE OWN OVER
2,000 pcs
OF EQUIPMENT





The Brayton Point Commerce Center (BPCC) is a combination of Pangaea Logistics and Carver Maritime operating as Patriot Stevedoring + Logistics. BPCC is a unique logistical port strategically positioned to receive, transport, store and distribute bulk material.

- STEVEDORING
- TERMINAL HANDLING
- WAREHOUSING
- TUG AND BARGE
- CARGO TYPES HANDLED
- STAGING AREA WITH INDOOR/OUTDOOR STORAGE
- BULK STORAGE
- SPECIALIZED EQUIPMENT RENTALS
- SHIP AND BARGE REPAIR
- PROPERTY RENTALS
- DREDGING
- RECYCLING
- PORT-TO-PORT SERVICES
- TRANSPORTATION/TRUCKING
- FOREIGN TRADE ZONE AVAILABILITY
- LAY BERTH
- RIPRAP WATERWAY REPAIR



TERMINAL ENCOMPASSES
145 acres
OF LAYDOWN

WE HAVE
34 feet
OF WATER DRAFT



CARVER MATERIALS



Trucking at Carver Companies is an essential division, with our fleet of tractor trailers, single axles, tri axles, lowboys, dry van, drop deck, flatbed and extendable trailers supporting our internal and external operations.

- EQUIPMENT MOVES
- LOWBOY HAULS
- AGGREGATE HAULS
- SPECIALTY VEHICLES- LINE BELT
- SERVICE THE EAST COAST



WE HAVE
over 70
COMMERCIAL VEHICLES

AND AVERAGE
3.4 million
MILES A YEAR

An aerial photograph of a large-scale quarry operation. A prominent turquoise-colored pond is situated in the center of the quarry. The surrounding landscape is characterized by steep, layered rock walls and extensive areas of greyish-brown material, likely crushed stone or aggregate. Several pieces of heavy machinery, including excavators and trucks, are visible on the ground. A small building is located near the pond on the left side. The background shows a dense forest of green trees.

15 LOCATIONS SERVING
2 coasts
(ATLANTIC & GULF)

WE HAVE OVER
100 trucks
AVAILABLE FOR DELIVERIES

PRODUCTS APPROVED BY
D.O.T.
IN NY, MA, SC & FL



In 1966 Carver Sand & Gravel was established to form a natural transition between product and service. We started with a small sand and gravel pit, purchased a rock quarry and our customer-oriented company launched into the Materials Industrial Business we are today. Over the next several years Carver Sand and Gravel has grown by obtaining additional quarries, sandpits, blacktop plants and a fleet of trucks to keep it all moving.



Crushed Stone

- FINE
- 1/4" TO 4" STONE
- CRUSHER RUN
- RIPRAP

Sand & Gravel

- FINE
- COARSE
- BASE COARSE

Specialty

- FINE
- COARSE



FEATURED PROJECT:
JFK Park and Marina Restoration
Yonkers, NY

The material processed from our Lafarge quarry was utilized to line a riverbank in Yonkers. Roughly 1,700 tons of these 2 -3 -ton boulders were excavated with intent to keep them fairly uniform in size, shape and color, giving the river bank a very clean look.



FEATURED PROJECT:
Halloween Storm Hangover 2019
Throughout upstate NY

Nearly 50,000 tons of various materials such as railroad ballast, crusher run, and rip rap stone fills, were pulled from our Johnstown and Schoharie quarries to re-open these much-needed arteries. A blocked canal lock needed to be accessed to remove the misc. debris. Our stone fills were used to make a roadway in the canal to access and remove the debris. Our crusher run was used to reinforce roadways.



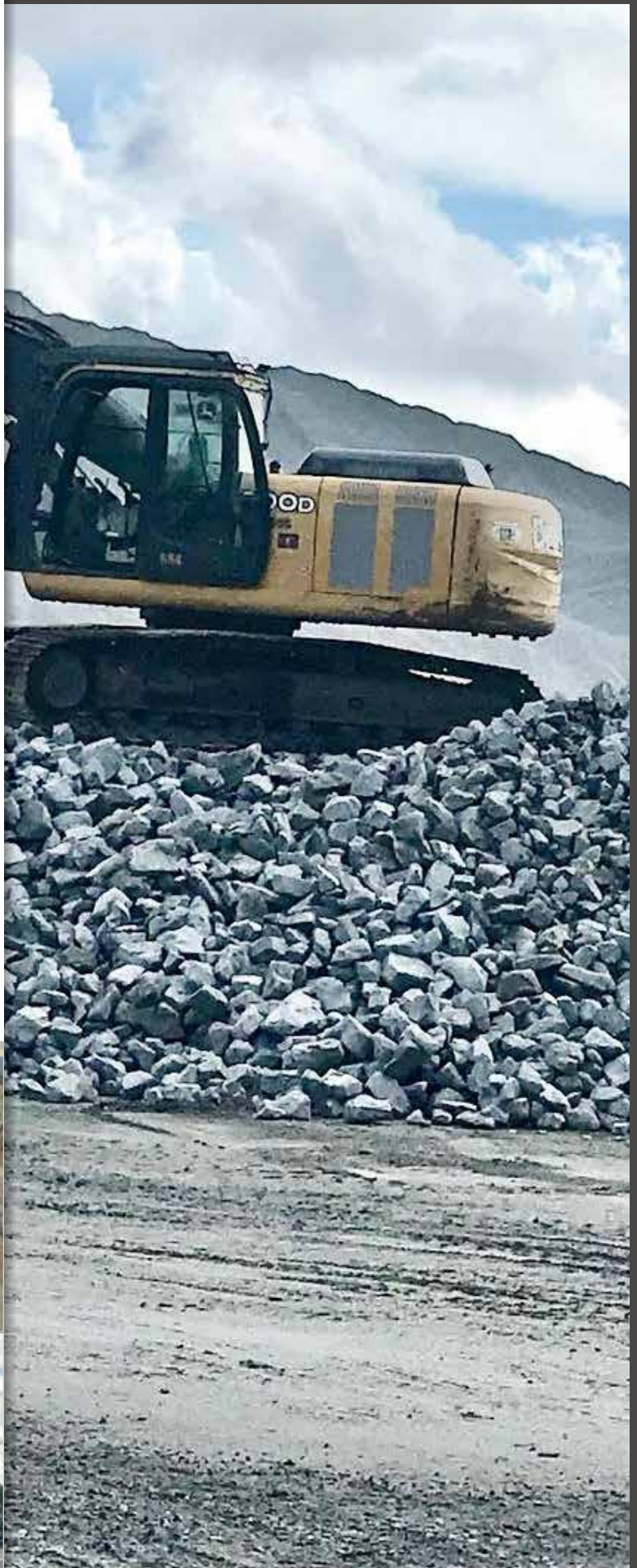
FEATURED PROJECT:
Rockaway Project
Rockaway Beach, Queens, NY

Granite material from our Johnstown quarry is being used as break walls in the Atlantic Ocean. Boulders ranging from 7.5-12.5 ton are carefully sized for use in this project.

Carver

SAND & GRAVEL
SOUTHEAST

Carver Sand & Gravel Southeast is a division of Carver Sand & Gravel that supplies Charleston, South Carolina and the Southern East Coast area.

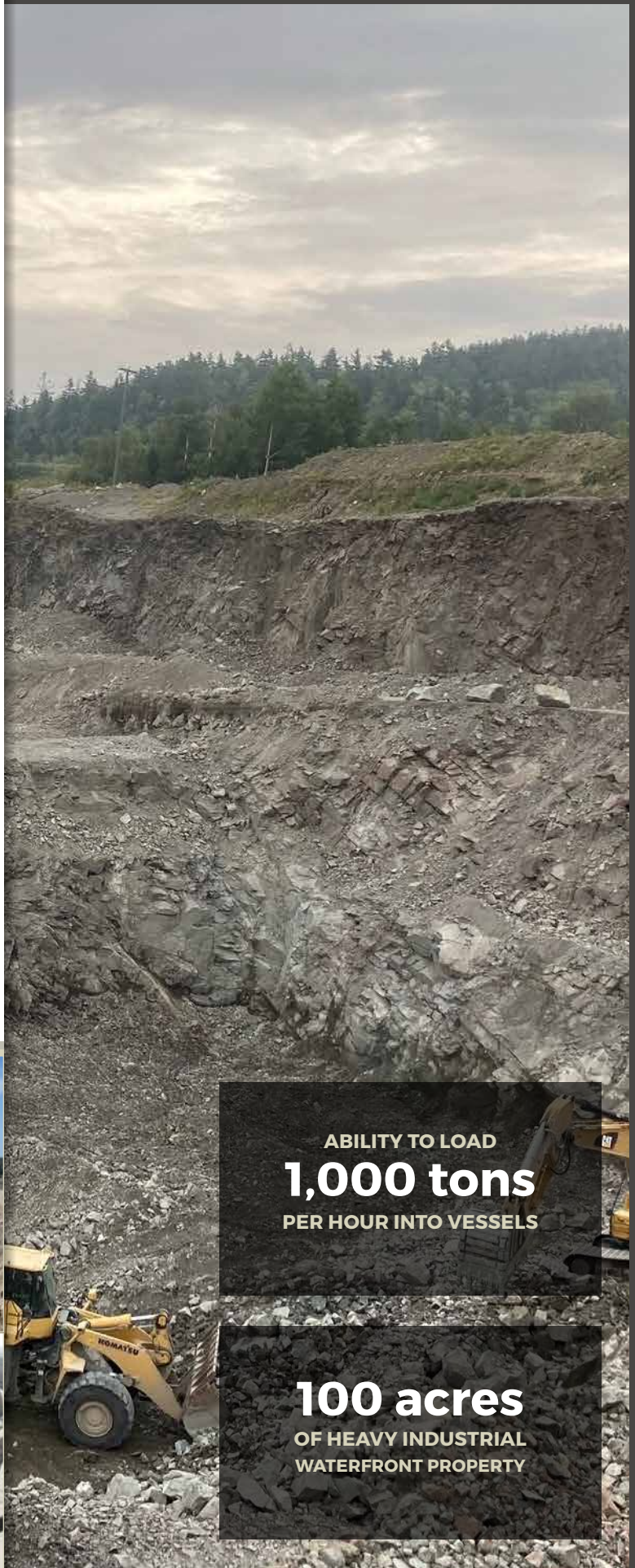




Carver Canada is the newest location to the Carver Companies family.

Carver Canada's operation includes a granite quarry and a port facility located in Bayside, New Brunswick.

- TRANSPORTATION/TRUCKING
- TUG AND BARGE
- STEVEDORING
- PROPERTY RENTALS
- WAREHOUSING
- PORT-TO-PORT SERVICES



ABILITY TO LOAD
1,000 tons
PER HOUR INTO VESSELS

100 acres
OF HEAVY INDUSTRIAL
WATERFRONT PROPERTY



CARVER CONSTRUCTION



Keeping your community clean for over 25 years! Since 1998, Canada has been offering its superior street and parking lot sweeping services. We have recently expanded to provide property management services to customers in the greater Capital District of NY. From sweeping and cleaning to parking lot repair, we can keep your facilities looking and functioning their very best.



- SWEEPING AND CLEANING
- PARKING LOT PAVEMENT REPAIRS
- PARKING LOT PAVING
- PARKING LOT ASPHALT OVERLAY
- PARKING LOT SEALCOATING AND CRACK FILL
- PARKING LOT STRIPING AND RE-STRIPING
- REMOVAL OF DEBRIS IN AND AROUND PARKING LOTS
- LAWN MAINTENANCE AND LANDSCAPING
- SNOW PLOWING, SALTING, HAULING AND REMOVAL





WE HAVE MORE THAN
30 years
IN THE INDUSTRY

COMBINED, WE HAVE OVER
130 years
OF MANAGEMENT EXPERIENCE

AND OWN MORE THAN
2,000 pcs
OF EQUIPMENT



Founded in 1989, Carver Construction was the first in the family of Carver Companies.

Originally a single crew digging cellars, Carver Construction quickly diversified into all types of developmental site work, becoming a regional leader in all phases of public, commercial, and private sector construction.



- SITE & CELLAR EXCAVATION
- WATER, SEWER, STORM LINE CONSTRUCTION & REPAIRS
- EARTHMOVING
- CLEARING, GRUBBING & EROSION CONTROL
- ROADS & SUBDIVISIONS
- IN-PLACE PAVING
- SEWAGE TREATMENT PUMP STATION
- INSTALLATION & REPAIRS
- CAMERA SERVICES FOR STORM OR SANITARY LINES
- EMERGENCY INFRASTRUCTURE REPAIR WORK
- MUNICIPAL & NYSDOT PROJECTS
- BUILDING DEMOLITION



FEATURED PROJECT:
Albany Hudson Electric Trail
Albany, NY to Hudson, NY

Moved almost 70,000 CY of material from cuts to fills over a 17 Mile stretch of the new bike trail. This \$14 Million Dollar project involved pipe, 4 bridges, box culvert, sub-base and paving of the entire stretch. An important part of the Empire State Trail, this trail is a key link between the Capital Region and the Mid-Hudson Valley. The Empire State Trail is a 750-mile biking and walking trail from New York City to Canada and from Albany to Buffalo.



FEATURED PROJECT:
North Ferry Street Force Main
Schenectady, NY

Installed over 13,000 LF of 30" ductile iron pipe which began in the Stockade area of Schenectady and continued for over 2 miles along the bike path. The crew successfully crossed 4 major roads while installing the 30" main. Construction of the \$6.5 million dollar project began in the fall of 2019 and is almost complete.



FEATURED PROJECT:
Frankfort - Ilion - Mohawk Canalway Trail
Frankfort, NY - Ilion, NY - Mohawk, NY

A project that involves 2 separate jobs that we have handled as one large project. The first section is from Frankfort to Ilion and was bid last year for \$4.4 Million Dollars. The next section is from Ilion to Mohawk, this project was bid in June of this year for \$6.3 Million Dollars. These trails will be the final sections of the Empire State Trail System.

Carver REAL ESTATE

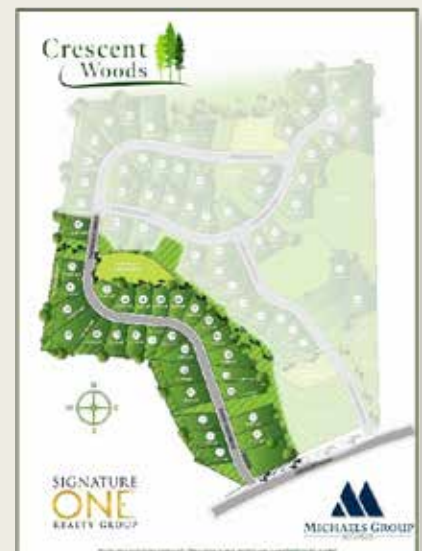
At Carver Companies, our vertically integrated, in-house capabilities allow us to act as developer, licensed general contractor, and real estate broker on projects. We work on every project scope, from concept to completion. As a full-service developer, we have the ability to rapidly move any project from site selection and acquisition to financing and construction and then to leasing and property management. Carver Realty has successfully partnered with clients around the region to complete both residential and commercial property projects.



FEATURED PROJECT:
Coeymans Landing Marina
Coeymans, NY



FEATURED PROJECT:
Crescent Woods
Clifton Park, NY



FEATURED PROJECT:
Middleburgh Meadows
Middleburgh, NY





An aerial photograph of a port area. In the foreground, a tugboat is pushing a large barge. The barge has a yellow excavator on its deck. In the background, there are several other barges and a large industrial facility with a sign that reads "PORT OF COEYMANS". The water is dark and calm.

CARVER COMPANIES

✉ INFO@CARVERCOMPANIES.COM

🌐 CARVERCOMPANIES.COM